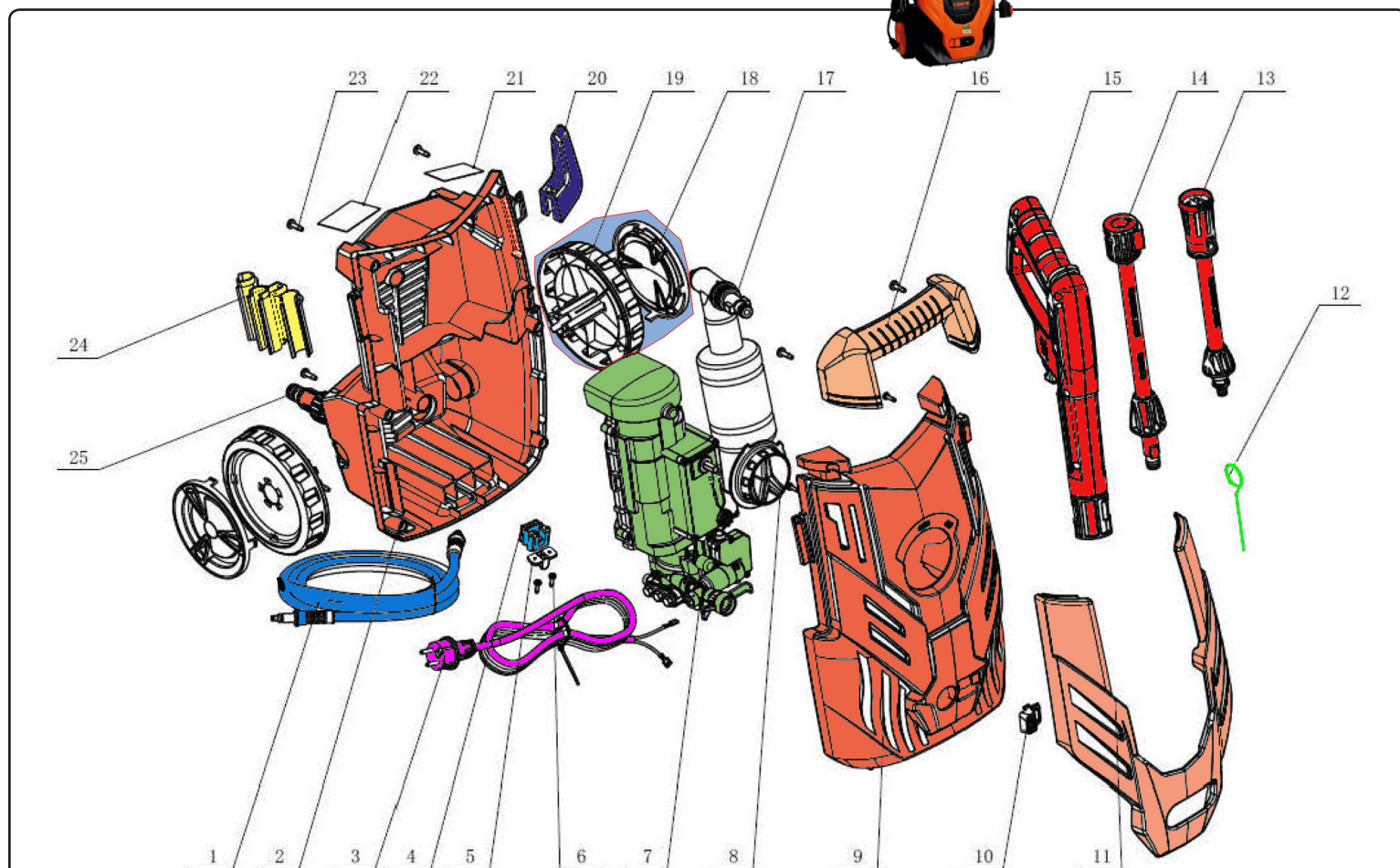
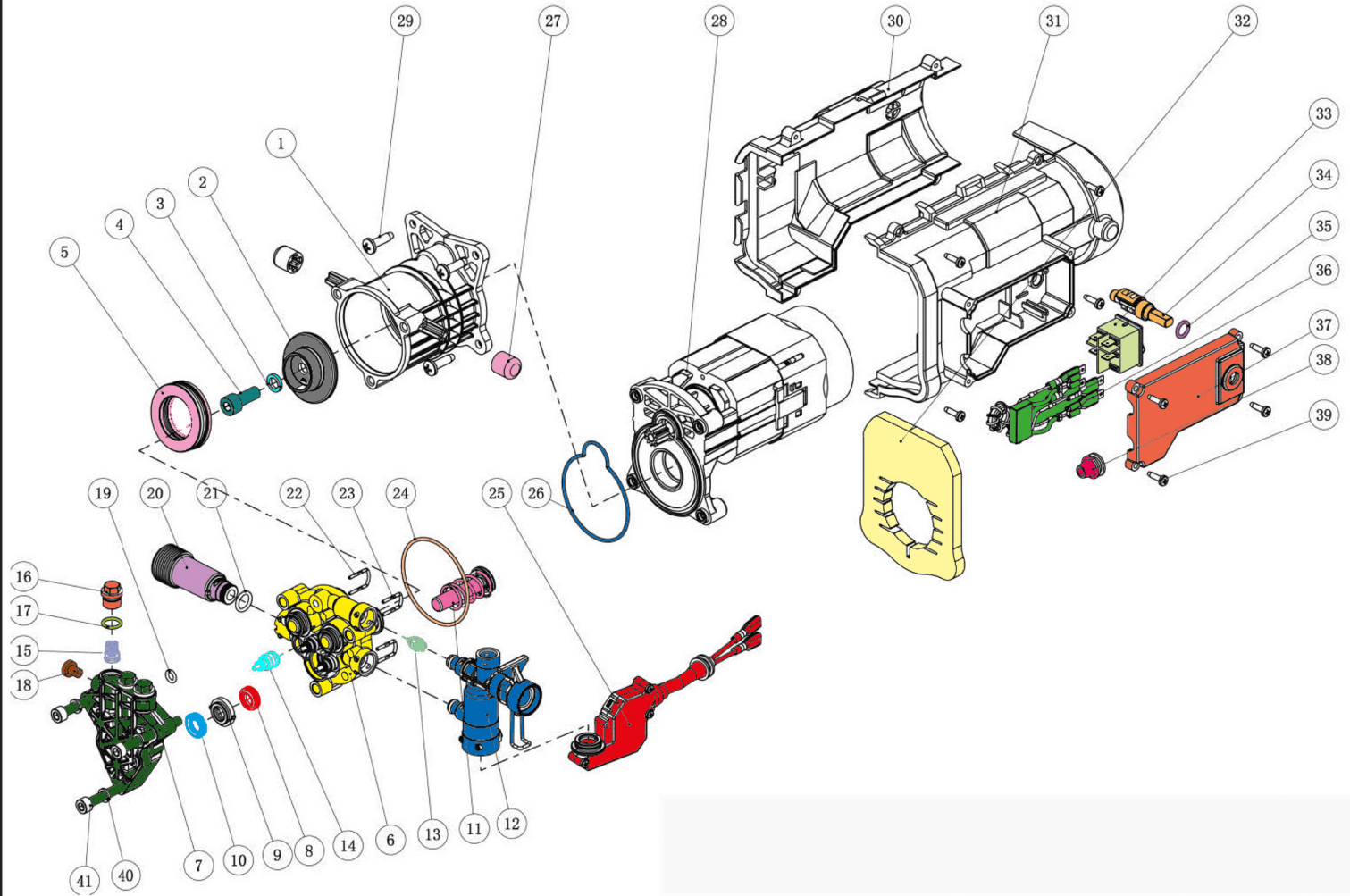


DAX100-1200

Ref. 00700159



N	Ref.	Descripción
1	00701584	MANGUERA ALTA PRESION DAX100-1200W
3	00701585	CABLE CORRIENTE DAX100-1200W
4	00701586	POWER CABLE JACKET DAX100-1200W
7	00701587	MOTOR + BOMBA DAX100-1200W
9	00701588	CUERPO FRONTAL DAX100-1200W
10	00701589	BOTON DAX100-1200W
11	00701590	CUBIERTA FRONTAL DAX100-1200W
12	00701591	PIN DE LIMPIEZA DAX100-1200W
13	00701592	BOQUILLA AJUSTABLE DAX100-1200W
14	00701593	LANZA EXTENSIBLE DAX100-1200W
15	00701594	PISTOLA DAX100-1200W
16	00701595	ASA DAX100-1200W
18+19	00701596	RUEDA + TAPA DAX100-1200W
20	00701597	SOPORTE CABLE DAX100-1200W
24	00701598	SOPORTE ACCESORIOS DAX100-1200W
25	00701599	CONECTOR ENTRADA AGUA DAX100-1200W



N	Ref	Descripción
2	00701555	PLACA AISLANTE DAX100-1200W
3	00701556	JUNTA 8 DAX100-1200W
4	00701557	TORNILLO M8X20 DAX100-1200W
5	00701558	RODAMIENTO DAX100-1200W
6	00701559	CUERPO + CUBRE BOMBA DAX100-1200W
7	00701560	CUBREBOMBA DAX100-1200W
8	00701561	EMBOLO SELLO ACEITE 10X16X4 DAX100-1200W
9	00701562	SOPORTE SELLO ACEITE DAX100-1200W
10	00701563	SELLO ACEITE 10X16X4 DAX100-1200W
11	00701564	CONJUNTO EMBOLO DAX100-1200W
12	00701565	CONJUNTO SALIDA MANGUERA DAX100-1200W
13	00701566	VALVULA PRESION TRASERA DAX100-1200W
14	00701567	VALVULA RETENCION ENTRADA DAX100-1200W
15	00701568	VALVULA RETENCION SALIDA DAX100-1200W
16	00701569	TAPA VALVULA RETENCION DAX100-1200W
17	00701570	ANILLO 9,5x1,8 DAX100-1200W
18	00701571	TORNILLO M6X8 DAX100-1200W
20	00701572	ENTRADA MANGUERA DAX100-1200W

N	Ref	Descripción
24	00701573	ANILLO 58x2 DAX100-1200W
25	00701574	INTERRUPTOR ON-OFF COMPLETO DAX100-1200W
26	00701575	ANILLO SELLADO DAX100-1200W
27	00701576	ANILLO AMORTIGUADOR DAX100-1200W
32	00701577	FILTRO CUBIERTA VENTILADOR DAX100-1200W
33	00701578	INTERRUPTOR PRINCIPAL DAX100-1200W
34	00701579	PALANCA CONDUCCION INTERRUPTOR DAX100-1200W
35	00701580	ANILLO 8x2 DAX100-1200W
36	00701581	CONDENSADOR DAX100-1200W
37	00701582	CUBIERTA INTERRUPTOR DAX100-1200W
38	00701583	CUBRE CABLE SALIDA DAX100-1200W